

DATASHEET

VIAjet™ V-Series

DROP-ON-DEMAND VALVE JET PRINTERS POWERED BY MPERIA®

Peak performance on your production line with the VIAjet V-Series: the most reliable, longest lasting Drop-on-Demand valve jet printers. Excelling in the harshest industrial environments, the V-Series marks your porous and non-porous substrates with clear, crisp marks at incredible speeds.

Ideal Applications

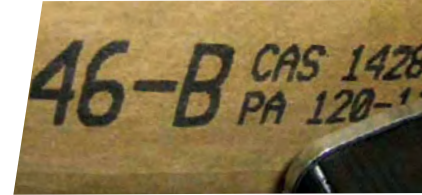
- + Large character printing on metal, paper and pulp, wood, concrete, plastic, tires, and more
- + Extreme environments such as building products facilities, steel mills, lumber processing plants, and other industrial settings
- + Branding, logo, or regulatory marking on your substrates for excellent retail presence

Advantages

- + Longest life DOD printheads at over 9 billion firings per head
- + Faster than competitive systems at 780 ft/min (240 m/min)
- + Extensive ink options ensure accurate marking every time
- + Advanced ink circulation reduces waste and cost-per-mark
- + Flushing valve systems mean easy cleaning and maintenance

Increase Production Line Efficiency

- + Centralize marking and coding control with the industry's only true universal controller, MPERIA®
- + Automate data flow with seamless database integration
- + Add marking technology and systems without extra investment or middleware



32V mark on industrial bag



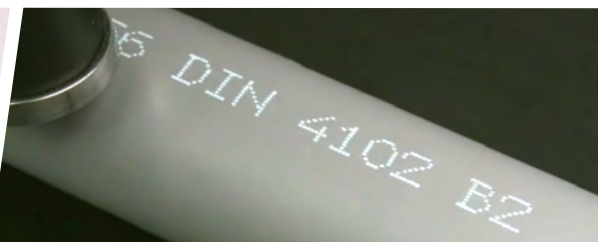
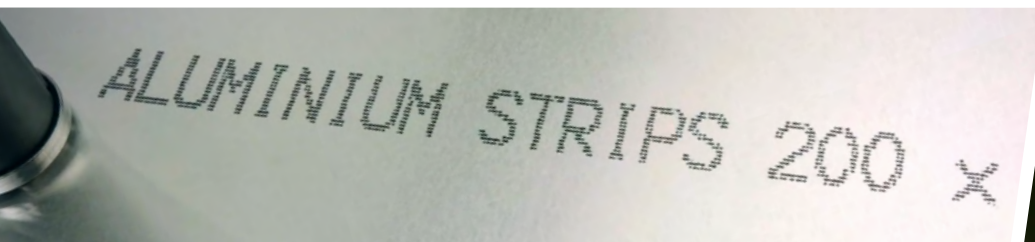
16V mark in fluorescent ink on lumber



32V mark in pigmented ink on tire



32V mark on OSB



VIAjet V-Series Specs

Print Capabilities

- + Static, dynamic, user-editable variable fields, and logos
- + Customizable date and time codes, sequential and batch counters
- + TrueType fonts with unique ink-saving print density and object color settings
- + 1D barcodes (GS1-128, GS1 DataBar, EAN-8/13, UPC-A, ITF/ITF-14, Code 39/128)
- + 2D codes (GS1-Data matrix, Data matrix, QR code)

Inks

- + Porous and non-porous substrates as well as opaque and pigmented applications
- + Engineered for building products, sheet metal, paper, pulp, wood, concrete, plastics, packaging, and other challenging substrates

Ink Delivery System

- + Multiple options: 2x1 liter, 19 liter/5 gallon, 208 liter/55 gallon, 275 gallon totes
- + Dye-based or circulatory for pigmented inks
- + Integrated low ink warning and warning output signals

V-Series V-Link

- + Connect 1–4 printheads (maximum of 32 valves)
- + Connect up to 2 triggers and 2 encoders per V-Link
- + Electrical Operating Conditions: 90–264 V AC 50–60 Hz 2.5 A Temp: 32–113° F (0 - 45° C) Humidity: 0–90 % non-condensing IP53

	Minimum character size	Maximum character size	Maximum speed	Maximum print distance ³	3-way valve ⁵	Dimensions
8000+ Maxi	1/4" (6.35 mm)	7-VALVE: 1 1/4" (31.75 mm)	780 fpm ¹ / 3.96 mps	1/2" (12.7 mm)	16-Valve	7-VALVE: 7.52" L x 1.68" W x 4.83" H (191 x 42.7 x 123 mm)
8000+ Midi	3/16" (4.76 mm)	16-VALVE: 2 1/2" (63.5 mm)	400 fpm ² / 2.03 mps			32-Valve
8000+ Mini IP65-7-VALVE PRINthead* AVAILABLE FOR WASHDOWN APPLICATIONS	3/32" (2.38 mm)	32-VALVE: 5" (127 mm)		1/4" (6.357 mm)		
Inks	Water Based, Water Fast, Alcohol (n-propylene, isopropylene, ethenol). Ethyl Acetate, MEK, Acetone, Pigmented					

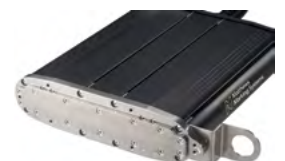
(1) At 1.8 mm spacing (2) At 1.0 mm spacing (3) At <200 fpm (4) IP65 3.4" Dia. x 5.2" L (87.5x132.0 mm) (5) Unique 3-way valve enables you to quickly purge solvent, minimizing maintenance and downtime



7-Valve



16-Valve



32-Valve

MPERIA Platform

MPERIA® Controller

- + Control multiple marking technologies and production lines
- + Ethernet-based with advanced connectivity possibilities for ERP systems, computers, PLCs
- + Password-protected user levels
- + Remote user interface control via VNC
- + Multilingual with full BIDI support
- + Intuitive touchscreen user interface
- + Built-in database and on-board image editor
- + Simple message creation and editing
- + Installation, configuration, troubleshooting, and maintenance guidance
- + Windows/Codesoft driver
- + Ample storage for messages, logos, barcodes, time codes, etc.



V-Link